



Moray First Marine is the only dedicated Workboat, ROV and Geophysical survey specialist in the Moray Firth who can provide Seabed search & recovery, ROV surveys, Multi-sensor Geophysical & Hydrographic surveys, Dive support & Crew Transfers.

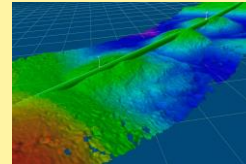
This document provides details on available services and is split broadly into ROV and Survey operations.

Select either ROV or Survey for detailed information

ROV Operations



Survey Operations



ROV Operations – Click in box for more information



**General
Visual
Inspection**

**Seabed
Clearance
survey**

**Cathodic
Protection
Survey**

**Cable
Survey**

**Benthic
Survey**

**Marine
Growth
Survey**

**Flooded
Member
Survey**

**Seabed
item
recovery**

Back to top

Back to main page

Survey Types – Click in box for more information



Area Survey

Cable Survey

UXO Survey

**Construction
support**

**Harbour
Survey**
(IHO Order 1a/1b)

**Harbour
Survey**
(IHO Special order)

**Debris
Survey
(Sidescan)**

**Debris
Survey
(Multibeam)**

Back to top

Back to main page

Survey Type	Description	Equipment	Personnel	Deliverables
<p data-bbox="50 266 361 454">General Visual Inspection</p>	<p data-bbox="388 266 691 598">Visual inspection using video of items of interest</p>	<p data-bbox="720 274 1023 467">Cameras</p> <p data-bbox="720 481 1023 674">Imaging Sonar</p>	<p data-bbox="1052 274 1356 467">Survey vessel Marine Crew</p> <p data-bbox="1052 481 1356 576">ROV crew</p>	<p data-bbox="1398 266 1850 689"><ul style="list-style-type: none">• Written report• Client guidance• Photos and video</p>

[Back to top](#)

[Back to ROV ops](#)

Survey Type	Description	Equipment	Personnel	Deliverables
<p data-bbox="54 263 357 450">Seabed Clearance survey</p>	<p data-bbox="390 263 693 833">Visual and imaging sonar inspection of sea bed. Target identification with optional recovery.</p>	<p data-bbox="726 263 1029 450">Cameras</p> <p data-bbox="726 465 1029 653">USBL and Sonar</p> <p data-bbox="726 678 1029 865">Recovery equipment</p>	<p data-bbox="1062 263 1365 450">Survey vessel Marine Crew</p> <p data-bbox="1062 476 1365 571">ROV crew</p> <p data-bbox="1062 596 1365 707">Surveyor</p>	<p data-bbox="1398 263 1852 669"><ul style="list-style-type: none">• Written report• Target listing• Photos and video</p>

[Back to top](#)

[Back to ROV ops](#)

Survey Type	Description	Equipment	Personnel	Deliverables
Cable Survey	Visual survey of cable	ROV cameras	Survey vessel Marine Crew	<ul style="list-style-type: none">• Written report• Target listing with images
	Cable tracking	Hi resolution positioning	Surveyor	
		Pipetracker	Onshore data processing & reporting	

[Back to top](#)[Back to ROV ops](#)

Survey Type	Description	Equipment	Personnel	Deliverables
<p data-bbox="54 299 357 489">Benthic Survey</p>	<p data-bbox="386 299 689 699">Marine Species distribution and types</p>	<p data-bbox="718 299 1022 489">HD camera</p> <p data-bbox="718 506 1022 696">USBL</p>	<p data-bbox="1051 299 1354 489">Survey vessel Marine Crew</p> <p data-bbox="1051 506 1354 696">Marine Biologist</p> <p data-bbox="1051 703 1354 893">ROV crew</p>	<ul data-bbox="1402 299 1852 674" style="list-style-type: none">• Written report with images• Specialist marine biology report

[Back to top](#)

[Back to ROV ops](#)

Survey Type	Description	Equipment	Personnel	Deliverables
Flooded member survey	Detection and assessment of flooded members.	Flooded member kit	Survey vessel Marine Crew	<ul style="list-style-type: none">• FMD specialist Reports• Video and photos
		Sonar	ROV crew	
			Onshore data processing & reporting	

[Back to top](#)[Back to ROV ops](#)

Survey Type	Description	Equipment	Personnel	Deliverables
<p data-bbox="131 317 280 473">Marine Growth survey</p>	<p data-bbox="409 412 666 707">To identify distribution, types and weight of marine growth on a structure</p>	<p data-bbox="774 380 973 423">MG probe</p> <p data-bbox="768 554 979 653">3D Photo-grammetry</p>	<p data-bbox="1078 347 1340 445">Survey vessel Marine Crew</p> <p data-bbox="1116 532 1302 576">ROV crew</p> <p data-bbox="1085 653 1333 871">Marine Biologist. 3.3U or 3.4U inspector</p>	<ul data-bbox="1425 361 1837 692" style="list-style-type: none">• Written report• Video and photos• Table of distribution, types and weights

[Back to top](#)

[Back to ROV ops](#)

Survey Type	Description	Equipment	Personnel	Deliverables
<p data-bbox="54 266 357 456">Cathodic Protection Survey</p>	<p data-bbox="386 266 689 836">To gain CP voltages using ROV mounted sensors.</p>	<p data-bbox="718 266 1022 463">Cameras and CP kit</p> <p data-bbox="718 470 1022 667">Possible 3D</p>	<p data-bbox="1051 266 1354 463">Survey vessel Marine Crew</p> <p data-bbox="1051 470 1354 565">ROV crew</p> <p data-bbox="1051 573 1354 769">Onshore data processing & reporting</p> <p data-bbox="1051 777 1354 896">3D specialist</p>	<p data-bbox="1402 266 1852 623"><ul style="list-style-type: none">• Written report• Tables of results</p>

[Back to top](#)

[Back to ROV ops](#)

Survey Type	Description	Equipment	Personnel	Deliverables
<p data-bbox="92 489 338 590">Seabed item recovery</p>	<p data-bbox="432 390 649 689">To find and recover scientific moorings or dropped objects.</p>	<p data-bbox="757 419 993 520">Cameras, sonar, USBL</p> <p data-bbox="784 594 966 746">Specialist recovery tools</p>	<p data-bbox="1078 416 1344 517">Survey vessel Marine Crew</p> <p data-bbox="1116 653 1306 689">ROV crew</p>	<ul data-bbox="1425 397 1818 670" style="list-style-type: none">• Written report• Video images• Recovered items for customer disposal.

[Back to top](#)

[Back to ROV ops](#)

Survey Type	Description	Equipment	Personnel	Deliverables
Area Survey	100% sea floor survey to determine sea floor topography, establish depths & identify features or obstacles.	Hi resolution multibeam	Survey vessel Marine Crew	<ul style="list-style-type: none">• Written report• Target listing• Digital XYZ data• Data viewer application
		Hi resolution positioning	Surveyor	
			Onshore data processing & reporting	

[Back to top](#)[Back to Survey ops](#)

Survey Type	Description	Equipment	Personnel	Deliverables
<p data-bbox="50 281 361 472">Debris Survey (Multibeam)</p>	<p data-bbox="386 281 689 554">100% sea floor survey to identify targets.</p> <p data-bbox="386 579 689 647">Optional</p> <p data-bbox="386 672 689 809">ROV video identification</p> <p data-bbox="386 834 689 970">Object removal</p>	<p data-bbox="718 281 1022 472">Hi resolution multibeam</p> <p data-bbox="718 481 1022 672">Hi resolution positioning</p>	<p data-bbox="1051 281 1354 472">Survey vessel Marine Crew</p> <p data-bbox="1051 481 1354 579">Surveyor</p> <p data-bbox="1051 590 1354 781">Onshore data processing & reporting</p>	<ul data-bbox="1402 281 1850 691" style="list-style-type: none"> • Written report • Target listing • Digital XYZ data • Data viewer application

[Back to top](#)

[Back to Survey ops](#)

Survey Type	Description	Equipment	Personnel	Deliverables
<p>Debris Survey (Sidescan)</p>	<p>100% sea floor survey to identify targets.</p> <p>Optional</p> <p>ROV video identification</p> <p>Object removal</p>	<p>Hi resolution Sidescan</p>	<p>Survey vessel Marine Crew</p> <p>Surveyor</p> <p>Onshore data processing & reporting</p>	<ul style="list-style-type: none"> • Written report • Target listing

[Back to top](#)

[Back to Survey ops](#)

Survey Type	Description	Equipment	Personnel	Deliverables
<p data-bbox="86 311 324 354">UXO Survey</p>	<p data-bbox="421 267 658 540">Conduct 100% sea floor survey to identify targets.</p> <p data-bbox="454 589 625 627">Optional</p> <p data-bbox="409 671 672 769">ROV video identification</p> <p data-bbox="459 819 622 917">Object removal</p>	<p data-bbox="749 289 1000 387">Hi resolution multibeam</p> <p data-bbox="749 491 1000 589">Hi resolution positioning</p> <p data-bbox="739 698 1010 791">Towed Magnetometer</p>	<p data-bbox="1078 283 1342 382">Survey vessel Marine Crew</p> <p data-bbox="1120 469 1300 507">Surveyor</p> <p data-bbox="1078 567 1342 726">Onshore data processing & reporting</p> <p data-bbox="1107 802 1313 900">UXO Specialists</p>	<ul data-bbox="1420 267 1796 655" style="list-style-type: none"> • Written report • Specialist UXO report • Target listing • Digital XYZ data • Data viewer application

Back to top

Back to Survey ops

Survey Type	Description	Equipment	Personnel	Deliverables
<p data-bbox="54 252 357 443">Cable Survey</p>	<p data-bbox="386 252 689 661">High resolution survey of cable, cable route or trench</p>	<p data-bbox="718 252 1022 448">Hi resolution multibeam</p> <p data-bbox="718 452 1022 648">Hi resolution positioning</p>	<p data-bbox="1051 252 1354 448">Survey vessel Marine Crew</p> <p data-bbox="1051 452 1354 558">Surveyor</p> <p data-bbox="1051 561 1354 757">Onshore data processing & reporting</p>	<p data-bbox="1402 252 1852 694"><ul style="list-style-type: none">• Written report• Cross profiles• Digital XYZ data• Data viewer application</p>

[Back to top](#)

[Back to Survey ops](#)

Survey Type	Description	Equipment	Personnel	Deliverables
Harbour Survey (IHO Special order)	High resolution survey of harbour where under-keel clearance is critical. 100% sea floor coverage	Hi resolution multibeam	Survey vessel Marine Crew	<ul style="list-style-type: none">• IHO Special order compliant data• THU/TVU data• Written report• Digital XYZ data• Data viewer application
		Hi resolution positioning	Surveyor	
			Onshore data processing & reporting	

[Back to top](#)[Back to Survey ops](#)

Survey Type	Description	Equipment	Personnel	Deliverables
<p>Harbour Survey (IHO Order 1a/1b)</p>	<p>High resolution survey of harbour where under-keel clearance is less critical. 100% sea floor coverage</p>	<p>Hi resolution multibeam</p> <p>Hi resolution positioning</p>	<p>Survey vessel Marine Crew</p> <p>Surveyor</p> <p>Onshore data processing & reporting</p>	<ul style="list-style-type: none">• IHO Order 1a/1b compliant data• THU/TVU data• Written report• Digital XYZ data• Data viewer application

[Back to top](#)

[Back to Survey ops](#)

Survey Type	Description	Equipment	Personnel	Deliverables
<p>Construction support</p>	<p>General purpose multibeam area surveys to acquire data for construction support (scour, sea floor movement)</p>	<p>Hi resolution multibeam</p> <p>Hi resolution positioning</p>	<p>Survey vessel Marine Crew</p> <p>Surveyor</p> <p>Onshore data processing & reporting</p>	<ul style="list-style-type: none">• Written report• Digital XYZ data• Data viewer application

[Back to top](#)

[Back to Survey ops](#)