

“Ocean Enterprise”



A unique and versatile aluminium workboat; a section of her deck slides under the wheel house to reveal a 6m x 3.5m moonpool. The stern roller can be removed to provide unobstructed access between the hulls. There is a dive ladder and good access for divers.

Her wide beam give excellent stability and the overhead gantry with a powerful winch and large crane gives her an unusual amount of versatility.

Ideal roles include - Dive support, Mooring Recovery & Placement; Construction support.

General

Build date – 2011

MCA Work boat category 2 – up to 60 miles

Presently for max 6 persons

Propulsion

2 x John Deere (6068) engines 225 HP each

Fixed propellers

Speed

Cruise – 9 Knots / Sprint – 10 knots

Accommodation

Wheel house seating, Galley, heads, Crew Cabins

Dimensions

Length 14.6m / Beam 7.32m / Draught 1m

Deck Space

Aft – 6 x 3.5m = 21m², 6 tonnes load

Moonpool opens to 6 x 3.5m

Tank Facilities

Fuel – 1900 Litres / Fresh Water – 300 litres

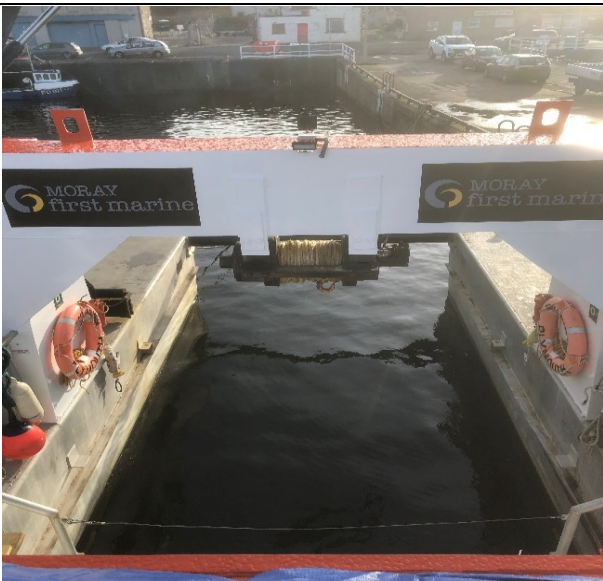
Auxiliary Equipment

Generator and inverter

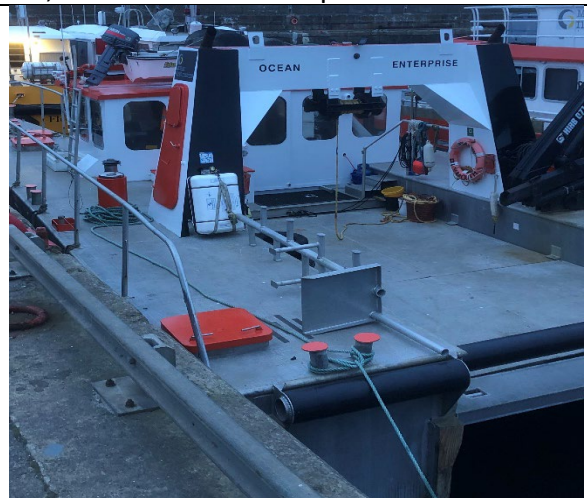
Overhead gantry & 5 ton winch

HIAB 071AW crane,
1000kg at 6.9m, 2000 kg at 3.35m

2 Hydraulic capstans; 4-point anchoring; dive ladder; 4m tender with 25hp outboard



Deck Open - 6m x 3.5m Moon Pool



Deck Closed - 21m² 6 tonnes

Make us your First Choice!

Moray First Marine. Wester Oldtown, Roseisle. IV30 5YD Tel: 07775 802963 Email:

bill@moraymarine.com www.moraymarine.com