

## “Ocean Enterprise”



A unique and versatile aluminium workboat; her entire deck slides under the wheel house to reveal a 6m x 3.5m moonpool. When the stern roller is removed an 8m boat could be docked between the hulls!

The overhead gantry, powerful winch and large crane gives her the lifting and cargo capacity of a much larger boat.

This capacity, coupled with her tremendous stability and shallow draft make her ideally suited for a wide variety of work.

### General

Build date – 2011

MCA Work boat category 2 – up to 60 miles

Presently for max 6 persons

### Propulsion

2 x John Deere (6068) engines 225 HP each

Fixed propellers

### Speed

Cruise – 9 Knots / Sprint – 10 knots

### Accommodation

Wheel house seating, Galley, heads, Crew Cabins

### Dimensions

Length 14.6m / Beam 7.32m / Draught 1m

### Deck Space

Aft – 6 x 3.5m = 21m<sup>2</sup>, 6 tonnes load

Moonpool opens to 6 x 3.5m

### Tank Facilities

Fuel – 1900 Litres / Fresh Water – 300 litres

### Auxiliary Equipment

Generator and inverter

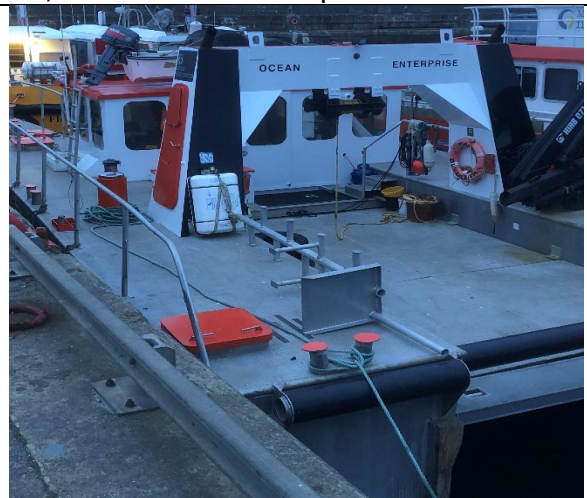
Overhead gantry & 2.4 ton winch (present test)

HIAB 071AW crane,  
1000kg at 6.9m, 2000 kg at 3.35m

2 Hydraulic capstans; 4-point anchoring; dive ladder; 4m tender with 25hp outboard



*Deck Open - 6m x 3.5m Moon Pool*



*Deck Closed - 21m<sup>2</sup> 6 tonnes*

*Make us your First Choice!*

Moray First Marine. Wester Oldtown, Roseisle. IV30 5YD Tel: 07775 802963 Email:

[bill@moraymarine.com](mailto:bill@moraymarine.com) [www.moraymarine.com](http://www.moraymarine.com)